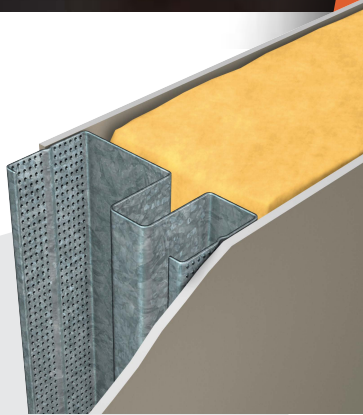




PRODUCT DATA SHEET

RONDO®

QUIET STUD® ACOUSTIC WALL SYSTEM



Noise is actually vibration. A normal stud conducts the vibration across its web, and sound is transmitted via anything that reacts to it by vibrating. The Rondo QUIET STUD® is overall bigger in surface area than a standard wall stud. Therefore, the sound (vibration) has further to travel and tends to weaken in intensity across the wall, resulting in a more acoustic efficient wall system.

Its unique design, combined with appropriate lining board systems, forms an effective buffer against unwanted noise to provide a cost-effective solution to acoustic control provisions.

SOUND ISOLATION / FIRE-RATED / SIMPLE INTEGRATION

BENEFITS

- Achieves superior performance in a smaller footprint, leaving more floor space
- Quick installation as Contractor uses standard steel stud drywall installation practices, resulting in lower labour costs
- Utilises standard Rondo 92mm top and bottom wall tracks
- Standard 92mm wide stud system
- Bell-mouthed service holes for electrical cabling
- Studs feature a wider 45mm fixing flange
- Studs are designed for a friction fit into top & bottom wall track

SUITABLE FOR

- Acoustic control provisions
- Acoustic wall system
- Fire Rated and Non-fire rated Systems
- Inter-tenancy walls if discontinuous construction is not required (popular in apartments)



| STANDARDS & CODES | CEILINGS | | | | | | WALLS | | | ACCESSORIES | FINISHING SECTIONS | | ACCESS PANELS | FASTENERS |
|---|----------|------|----------|--------|------------|--------------|--------------|-----------|------------|-------------|--------------------|------------|---------------|------------|
| | DUO | DONN | KEY-LOCK | XPRESS | WALK-ABOUT | STUD & TRACK | STUD & TRACK | MAXIFRAME | QUIET STUD | TOP HATS | EXANGLE | EXANGLE RT | PANTHER | CERT-R-FIX |
| NCC 2022 - Building Code of Australia Volumes 1 & 2 | | | | | | | | | | | | | | |
| NZBC - B1/VM1 NZ Building Code Verification Method B1/VM1 Clause 2 | | | | | | | | | | | | | | |
| NZBC - B2 Durability Rondo XPRESS® Drywall Grid System will have a minimum serviceable life of 15 years when installed in a dry, non-corrosive, interior installation. | | | | | | | | | | | | | | |
| AS/NZS 1170.0:2002 Part 0: General principles | | | | | | | | | | | | | | |
| AS/NZS 1170.1:2002 Part 1: Permanent, imposed & other actions | | | | | | | | | | | | | | |
| AS/NZS 1170.2:2021 Part 2: Wind actions | | | | | | | | | | | | | | |
| AS 1170.4:2007 Part 4: Earthquake actions in Australia | | | | | | | | | | | | | | |
| NZS 1170.5:2004 Part 5: Earthquake actions in New Zealand | | | | | | | | | | | | | | |
| NZS 4219:2009 Seismic performance of engineering systems in buildings | | | | | | | | | | | | | | |
| AS/NZS 4055:2021 Wind loads for housing | | | | | | | | | | | | | | |
| AS/NZS 4600:2018 Cold formed steel structures | | | | | | | | | | | | | | |
| AS/NZS 2785:2020 Suspended Ceilings - Design & installation | | | | | | | | | | | | | | |
| AS 3566.1:2002 Self-drilling screws for the building and construction industries - General requirements and mechanical properties | | | | | | | | | | | | | | |
| AS 5216:2021 Design of post-installed and cast-in fastenings in concrete | ■ | ■ | ■ | ■ | ■ | ■ | ■ | ■ | ■ | | | | | |
| AS1530.4:2014 Fire resistance tests for elements of construction | | | | | | | | | | | | | | |
| AS/NZS 1530.3:1999 Simultaneous determination of ignitability, flame propagation, heat release and smoke release (Reconfirmed 2016) | | | | | | | | | | | | | | |
| AS 1191:2002 Acoustics - Method for laboratory measurement of airborne sound transmission insulation of building elements | | | | | | | | | | | | | | |
| AS/NZS ISO 717.1:2004 Acoustics - Airborne sound insulation | | | | | | | | | | | | | | |

STRUCTURAL DESIGN ACTIONS

| STANDARDS & CODES | CEILING | | | | | | WALLS | | | ACCESSORIES | FINISHING SECTIONS | | ACCESS PANELS | FASTENERS |
|--|---------|------|----------|--------|------------|--------------|--------------|-----------|------------|-------------|--------------------|------------|---------------|------------|
| | DUO | DONN | KEY-LOCK | XPRESS | WALK-ABOUT | STUD & TRACK | STUD & TRACK | MAXIFRAME | QUIET STUD | TOP HATS | EXANGLE | EXANGLE RT | PANTHER | CERT-R-FIX |
| ASTM C635/C635M-17 Standard Specification for Manufacture, Performance and Testing of Metal Suspension Systems for Acoustical Tile and Lay-in Panel Ceilings | | | | | | | | | | | | | | |
| AS 3623:1993 Domestic metal framing | | | | | | | | | | | | | | |
| AS/NZS 1657:2018 Fixed platforms, walkways, stairways & ladders. Design, construction & installation | | | | | | | | | | | | | | |
| AS/NZS 1397:2021 Continuous hot-dip metallic coated steel sheet & strip - Coatings of zinc & zinc alloyed with aluminium & magnesium | * | | | | | | | | | | | | | |
| AS/NZS 1664.1:1997 Aluminium structures - Limit state design | ● | | | | | | | | | | | | | |
| AS/NZS 1866:1997 Aluminium & aluminium alloys - Extruded rod, bar, solid & hollow shapes | ● | | | | | | | | | | | | | |
| AS/NZS 2311:2017 Guide to the painting of buildings | | | | | | | | | | | | | | |
| AS/NZS 2589:2017 Gypsum Linings - Application & finishing | | | | | | | | | | | | | | |

- * EXCLUDES ALUMINIUM
- APPLIES TO ALUMINIUM GRID ONLY
- REFER TO CERT-R-FIX MANUAL

For comprehensive design and installation guides please [click here](#) to access the **Rondo Professional Series**

MATERIAL SAFETY DATA INFORMATION

MATERIALS

Products manufactured by Rondo Building Services are produced from coated steel coil material which is classified as a non-hazardous material.

PRODUCTION PROCESSES

A water-based soluble lubricant is used to assist with the roll forming process. These soluble lubricants are not considered hazardous when used as recommended by the manufacturer.

HANDLING AND STORAGE

Products are supplied in pack and sub-pack quantities and should be handled in accordance with the recommendations contained in AS 1470 – Health and Safety at Work Principles and Practice.

Where mechanical lifting or moving equipment is required, trained, and licensed operators are to be used.

Metal products should be stored in an environmentally friendly area away from moisture and airborne contaminants such as acid and salt sprays.

SAFETY

It is our recommendation that PPE should be worn when handling metal products (AS 2161 –Occupational Protective Gloves) and that they should be checked regularly for damage.

People with sensitive skin conditions should seek medical advice before prolonged handling of metal products: hands should be washed before eating and for personal hygiene.

Safety glasses (AS/NZS 1336) should be worn when cutting metal sections.

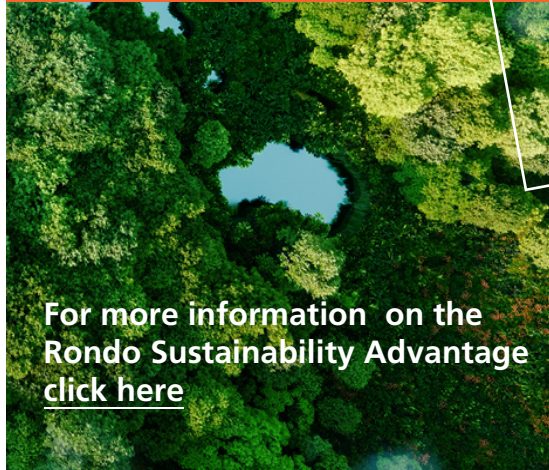
SITE TRAINING

It is the responsibility of the contractor to ensure their employees are trained in onsite WHS procedures as these can vary from site to site.

COMBUSTIBILITY

For more information on the steel used by Rondo visit www.steel.com.au or [click here](#).





For more information on the Rondo Sustainability Advantage [click here](#)

ENVIRONMENTAL PRODUCT DECLARATION (EPD)

The Rondo EPD provides to a customer the Life Cycle Assessment (LCA) data for over 300 products and 53 product families.

source the LCA data by selecting the required part numbers that make up the system within one EPD.

The Rondo EPD was certified, and made available to Rondo customers in December 2020, [click here](#) to download.



RONDO WARRANTY

Rondo's quality products are backed by our comprehensive warranty.

With minimal exclusions, our warranty provides optimal peace of mind.

For more information on our warranty [click here](#).



CERTIFICATIONS

