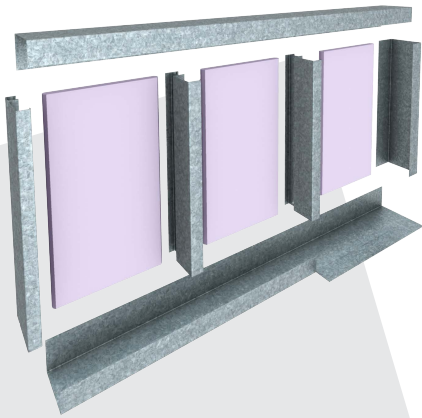




PRODUCT DATA SHEET

RONDO®

SHAFTWALL ONE WAY ERECTED SYSTEM



The Rondo SHAFTWALL is a one-way erected wall system that is suitable for both fire-rated and sound-rated applications. The system is designed to encase lift shafts, stairwells and service ducting in low and high-rise construction areas.

SIMPLE INTEGRATION / FIRE-RATED & ACOUSTIC DESIGN/ EFFICIENT

BENEFITS

- Rapid installation with no need to gain access within the shaft.
- The SHAFTWALL System is most appropriate for lift shafts and stairwells as well as service ducts.
- All components are screw and adhesive fixed so there is no need for welding or bolting, saving labour time.
- Rondo SHAFTWALL System are both acoustic and fire rated.

SUITABLE FOR

- Fire-rated applications
- Sound-rated applications
- Lift shafts
- Stairwells
- Service ducting (low & high-rise construction areas)

RONDO

| STANDARDS & CODES | CEILINGS | | | | | | WALLS | | | ACCESSORIES | FINISHING SECTIONS | | ACCESS PANELS | FASTENERS |
|---|----------|------|----------|--------|------------|--------------|--------------|-----------|------------|-------------|--------------------|------------|---------------|------------|
| | DUO | DONN | KEY-LOCK | XPRESS | WALK-ABOUT | STUD & TRACK | STUD & TRACK | MAXIFRAME | QUIET STUD | TOP HATS | EXANGLE | EXANGLE RT | PANTHER | CERT-R-FIX |
| NCC 2022 - Building Code of Australia Volumes 1 & 2 | | | | | | | | | | | | | | |
| NZBC - B1/VM1 NZ Building Code Verification Method B1/VM1 Clause 2 | | | | | | | | | | | | | | |
| NZBC - B2 Durability Rondo XPRESS® Drywall Grid System will have a minimum serviceable life of 15 years when installed in a dry, non- corrosive, interior installation. | | | | | | | | | | | | | | |
| AS/NZS 1170.0:2002 Part 0: General principles | | | | | | | | | | | | | | |
| AS/NZS 1170.1:2002 Part 1: Permanent, imposed & other actions | | | | | | | | | | | | | | |
| AS/NZS 1170.2:2021 Part 2: Wind actions | | | | | | | | | | | | | | |
| AS 1170.4:2007 Part 4: Earthquake actions in Australia | | | | | | | | | | | | | | |
| NZS 1170.5:2004 Part 5: Earthquake actions in New Zealand | | | | | | | | | | | | | | |
| NZS 4219:2009 Seismic performance of engineering systems in buildings | | | | | | | | | | | | | | |
| AS/NZS 4055:2021 Wind loads for housing | | | | | | | | | | | | | | |
| AS/NZS 4600:2018 Cold formed steel structures | | | | | | | | | | | | | | |
| AS/NZS 2785:2020 Suspended Ceilings - Design & installation | | | | | | | | | | | | | | |
| AS 3566.1:2002 Self-drilling screws for the building and construction industries - General requirements and mechanical properties | | | | | | | | | | | | | | |
| AS 5216:2021 Design of post-installed and cast-in fastenings in concrete | ■ | ■ | ■ | ■ | ■ | ■ | ■ | ■ | ■ | | | | | |
| AS1530.4:2014 Fire resistance tests for elements of construction | | | | | | | | | | | | | | |
| AS/NZS 1530.3:1999 Simultaneous determination of ignitability, flame propagation, heat release and smoke release (Reconfirmed 2016) | | | | | | | | | | | | | | |
| AS 1191:2002 Acoustics - Method for laboratory measurement of airborne sound transmission insulation of building elements | | | | | | | | | | | | | | |
| AS/NZS ISO 717.1:2004 Acoustics - Airborne sound insulation | | | | | | | | | | | | | | |

STRUCTURAL DESIGN ACTIONS

| STANDARDS & CODES | CEILING | | | | | | WALLS | | | ACCESSORIES | FINISHING SECTIONS | | ACCESS PANELS | FASTENERS |
|--|---------|------|----------|--------|------------|--------------|--------------|-----------|------------|-------------|--------------------|------------|---------------|------------|
| | DUO | DONN | KEY-LOCK | XPRESS | WALK-ABOUT | STUD & TRACK | STUD & TRACK | MAXIFRAME | QUIET STUD | TOP HATS | EXANGLE | EXANGLE RT | PANTHER | CERT-R-FIX |
| ASTM C635/C635M-17 Standard Specification for Manufacture, Performance and Testing of Metal Suspension Systems for Acoustical Tile and Lay-in Panel Ceilings | | | | | | | | | | | | | | |
| AS 3623:1993 Domestic metal framing | | | | | | | | | | | | | | |
| AS/NZS 1657:2018 Fixed platforms, walkways, stairways & ladders. Design, construction & installation | | | | | | | | | | | | | | |
| AS/NZS 1397:2021 Continuous hot-dip metallic coated steel sheet & strip - Coatings of zinc & zinc alloyed with aluminium & magnesium | * | | | | | | | | | | | | | |
| AS/NZS 1664.1:1997 Aluminium structures - Limit state design | ● | | | | | | | | | | | | | |
| AS/NZS 1866:1997 Aluminium & aluminium alloys - Extruded rod, bar, solid & hollow shapes | ● | | | | | | | | | | | | | |
| AS/NZS 2311:2017 Guide to the painting of buildings | | | | | | | | | | | | | | |
| AS/NZS 2589:2017 Gypsum Linings - Application & finishing | | | | | | | | | | | | | | |

- * EXCLUDES ALUMINIUM
- APPLIES TO ALUMINIUM GRID ONLY
- REFER TO CERT-R-FIX MANUAL

For comprehensive design and installation guides please [click here](#) to access the **Rondo Professional Series**

MATERIAL SAFETY DATA INFORMATION

MATERIALS

Products manufactured by Rondo Building Services are produced from coated steel coil material which is classified as a non-hazardous material.

PRODUCTION PROCESSES

A water-based soluble lubricant is used to assist with the roll forming process. These soluble lubricants are not considered hazardous when used as recommended by the manufacturer.

HANDLING AND STORAGE

Products are supplied in pack and sub-pack quantities and should be handled in accordance with the recommendations contained in AS 1470 – Health and Safety at Work Principles and Practice.

Where mechanical lifting or moving equipment is required, trained, and licensed operators are to be used.

Metal products should be stored in an environmentally friendly area away from moisture and airborne contaminants such as acid and salt sprays.

SAFETY

It is our recommendation that PPE should be worn when handling metal products (AS 2161 –Occupational Protective Gloves) and that they should be checked regularly for damage.

People with sensitive skin conditions should seek medical advice before prolonged handling of metal products: hands should be washed before eating and for personal hygiene.

Safety glasses (AS/NZS 1336) should be worn when cutting metal sections.

SITE TRAINING

It is the responsibility of the contractor to ensure their employees are trained in onsite WHS procedures as these can vary from site to site.

COMBUSTIBILITY

For more information on the steel used by Rondo visit www.steel.com.au or [click here](#).





For more information on the Rondo Sustainability Advantage [click here](#)

ENVIRONMENTAL PRODUCT DECLARATION (EPD)

The Rondo EPD provides to a customer the Life Cycle Assessment (LCA) data for over 300 products and 53 product families.

source the LCA data by selecting the required part numbers that make up the system within one EPD.

The Rondo EPD was certified, and made available to Rondo customers in December 2020, [click here](#) to download.



RONDO WARRANTY

Rondo's quality products are backed by our comprehensive warranty.

With minimal exclusions, our warranty provides optimal peace of mind.

For more information on our warranty [click here](#).



CERTIFICATIONS

